



HOSPITAL DOORS



SESAMO

A STORY OF QUALITY

In 1996 **SESAMO** obtained certification of the quality assurance system company according to the standard ISO 9001 / UNI EN 29001: not a goal but a starting point for project, production and testing of its products.

In 2002 **SESAMO** gets, among the first companies in Italy, compliance with the new regulations of UNI EN ISO 9001: 2000 quality as confirmation of the company's deep passion for providing high quality products and services.

Sesamo produces, installs and executes the production of doors for the sector healthcare and pharmaceuticals where acoustic, hygienic and thermal isolation are requirements fundamental.

A sealed hermetic or airtight door is used to isolate the different environments, whether they are operating rooms, laboratories, cleanrooms, recovery rooms, X-ray room or emergency care units.

Even in the pharmaceutical environment, thanks to sealing characteristics, hermetic doors guarantee the maintenance of different pressures, temperatures and noise. Sesamo doors guarantee to patients and hospital staff an access in all safety, comfort and hygiene.

Safety: our doors have the possibility to be integrated with access control devices; all accessories satisfy the most demanding quality standards and comply with international regulations.

Comfort: our doors can be customized to satisfy different type of configuration, thanks to the wide range of surface finishing materials and different options for opening, in manual or automatic mode.

Hygiene: fundamental aspect and priority. The surfaces, whether they are in HPL plastic laminate or stainless steel, as well like the perimetral profiles, they were carefully designed to prevent that impurities can creep into corners and joints.

SESAMO was born in 1965 in Casale connotation that will give it a precise Monferrato (AL) with the intention of company, technological and product reality producing automatisms for doors and over the next fifty years. Innovation and creativity move it quickly beyond its natural borders giving it an international dimension. Since seventies discovers his calling borders giving it an international dimension for automations for sliding doors: one dimension.



EXPERIENCE

For over 50 years Sesamo has been designing and building automatic entrances offering technological and innovative products

QUALITY

We use materials and production processes that guarantee a reliable product over time

FUNCTIONALITY

Our doors offer performance with low consumption of energy, silent and smooth movements

Manual and automatic doors both swing and sliding, hermetically sealed or simple airtight. Our doors comply to international standards



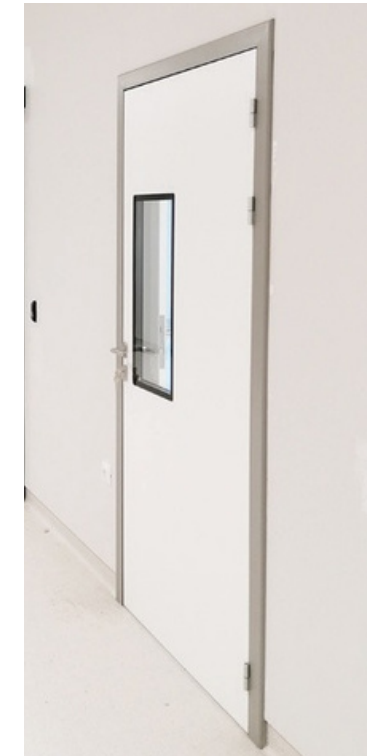
pag. 6
ERMETIKA

Hermetic sliding doors



pag. 10
STS 40

Airtight sliding doors



pag. 14
STB

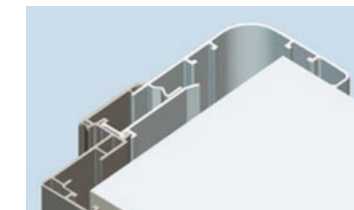
Hospital swing doors



pag. 20
FINISHES

- PANEL
 - high-pressure laminate
 - antibacterial
 - stainless steel
 - glass

- PROFILES
 - anodized
 - painted



pag. 22
WALL FRAMES

- single corner
- double
- telescopic
- with lead
- stainless steel



pag. 23
ACCESSORIES

- handles
- protection bands
- locks
- windows

Hermetic sliding doors



DESCRIPTION

The **Ermetika** sliding door is available in both manual and automatic version. The door has a perimeter frame with silver anodized aluminum profiles, 60 mm coplanar panel thickness, external finish in HPL or stainless steel. The silicone gaskets are mounted on all 4 sides of the door.

The innovative sliding guide of the automation allows you to manage the carriage descent and translation of 12 mm to obtain levels of air permeability according to the *UNI standard EN 1026: 2016* in depression, up to class 4 according to the *UNI EN 12207: 2017* standard.

CERTIFICATIONS

The Ermetika sliding door has been tested at the laboratory Giordano Institute according to the European standard *UNI EN 1026: 2016* and according to the American standard *UL 1784: 2015*, obtaining results above market values for these range of products. These standards define the method of test to determine the air permeability of doors and windows.



MODELS

Automatic with **KIT Ermetika**
Partial opening
Full opening

Manual
Partial opening
Full opening

DOOR PANEL

Thickness 60 mm, support thickness 4mm and perimeter strip in MDF fire retardant to ensure adequate support also for doors with lead shielding. Internal core in polystyrene self-extinguishing class "E". External finish in HPL 0.9mm thickness, also available with antibacterial treatment, or Scotch-Brite AISI stainless steel 304 10/10 Available in the version with lead shield, thickness 1-2-3 mm.

COVER

Cover anodized aluminum free of sharp edges or Scotch Brite stainless steel AISI 304 10/10.

FLOOR GUIDES

Double steel floor guide with insert in low-friction material.

WALL FRAME

Perimeter wall frame in aluminum anodized or painted, available in versions with a simple "L" shaped, double "L" for 100 mm wall thickness, double "L" and insert in HPL or steel laminate.

FRAME PROFILES

Aluminum profiles with chemical anodization sandblasted to make it perfectly homogeneous and thickness of 2 mm to ensure strenght and **ACCESSORIES**

hermetic seal, even in the presence of heavy doors and high pressures. Available in RAL finish.

- handles
- protective bands
- windows

GASKETS

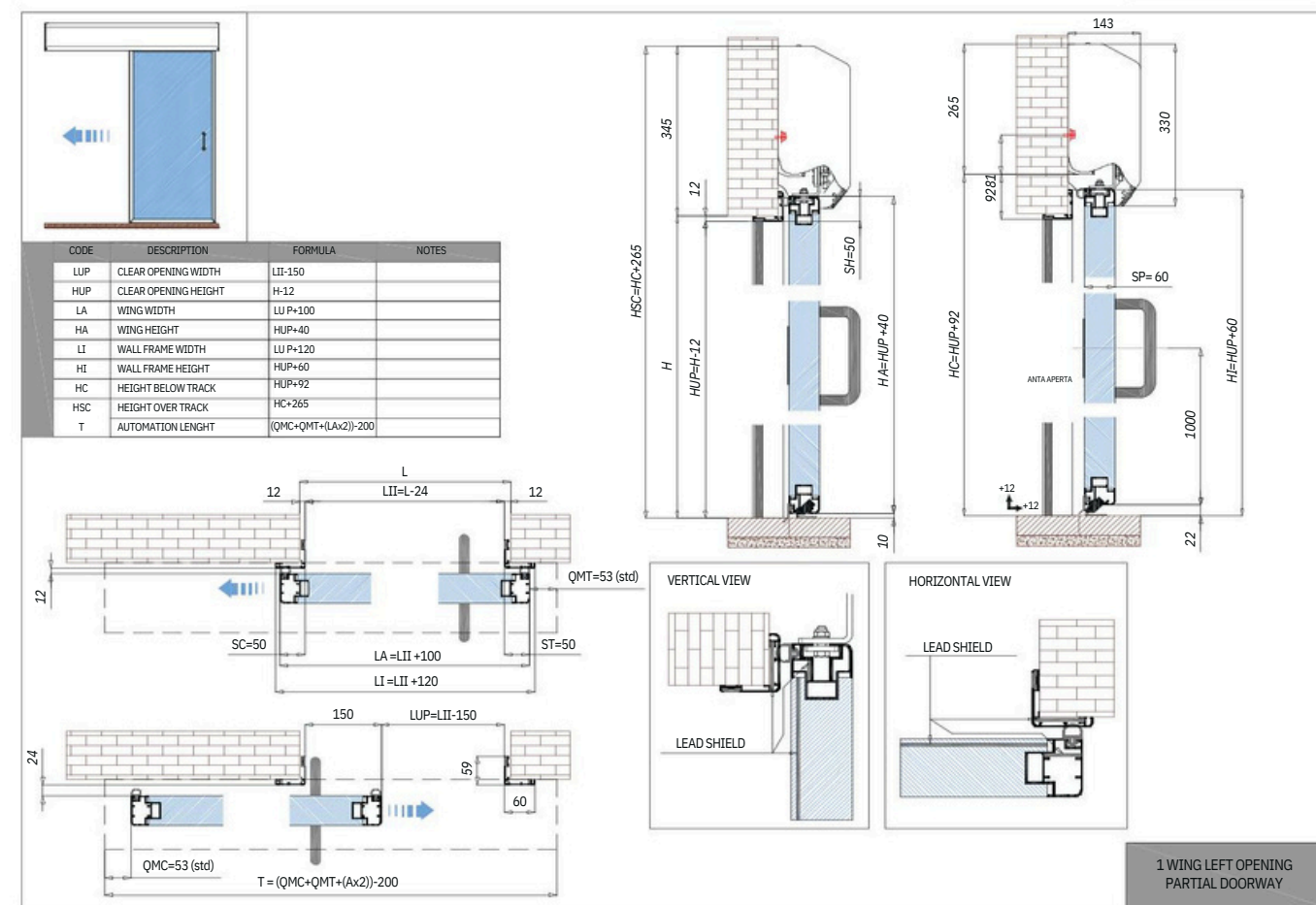
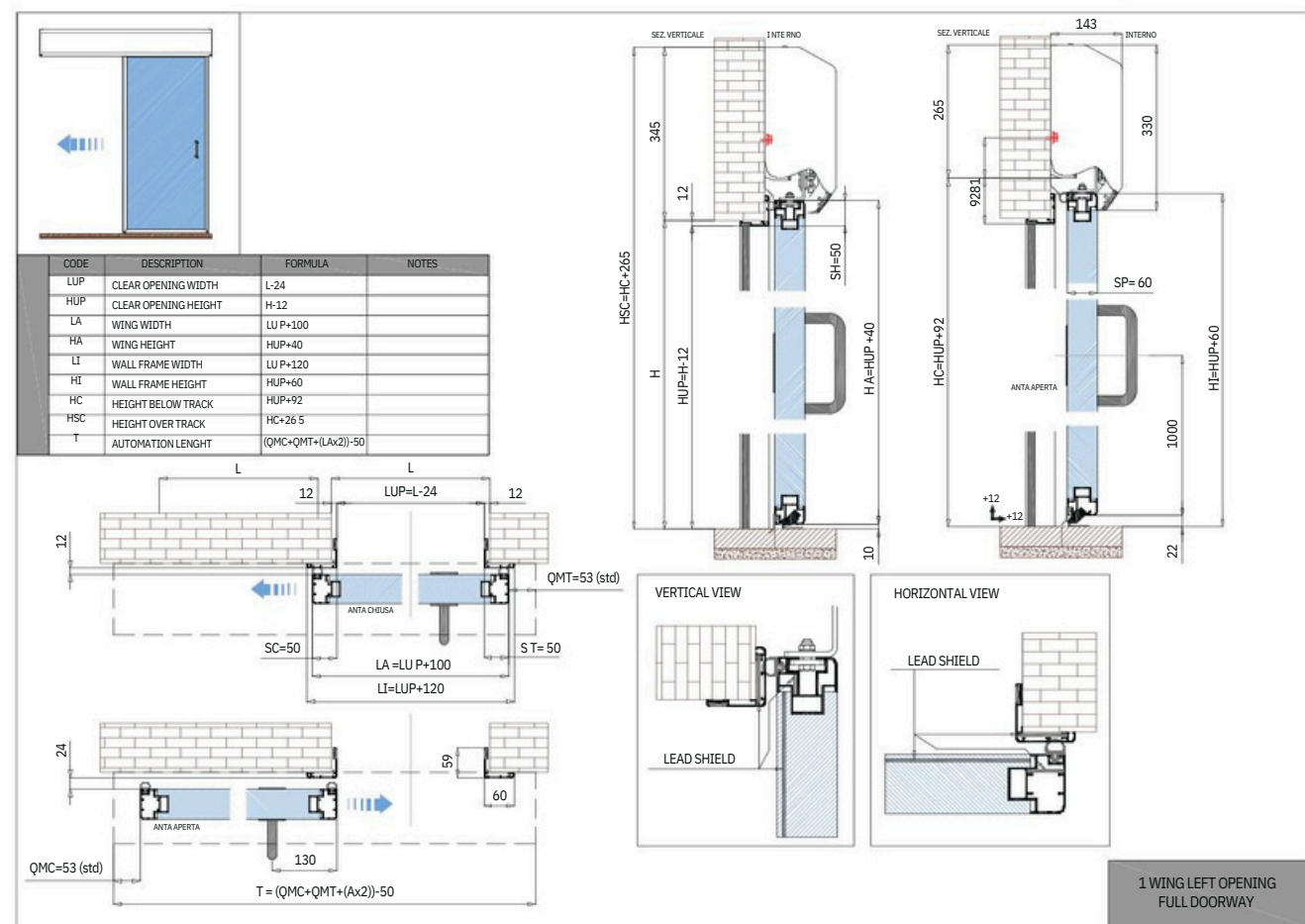
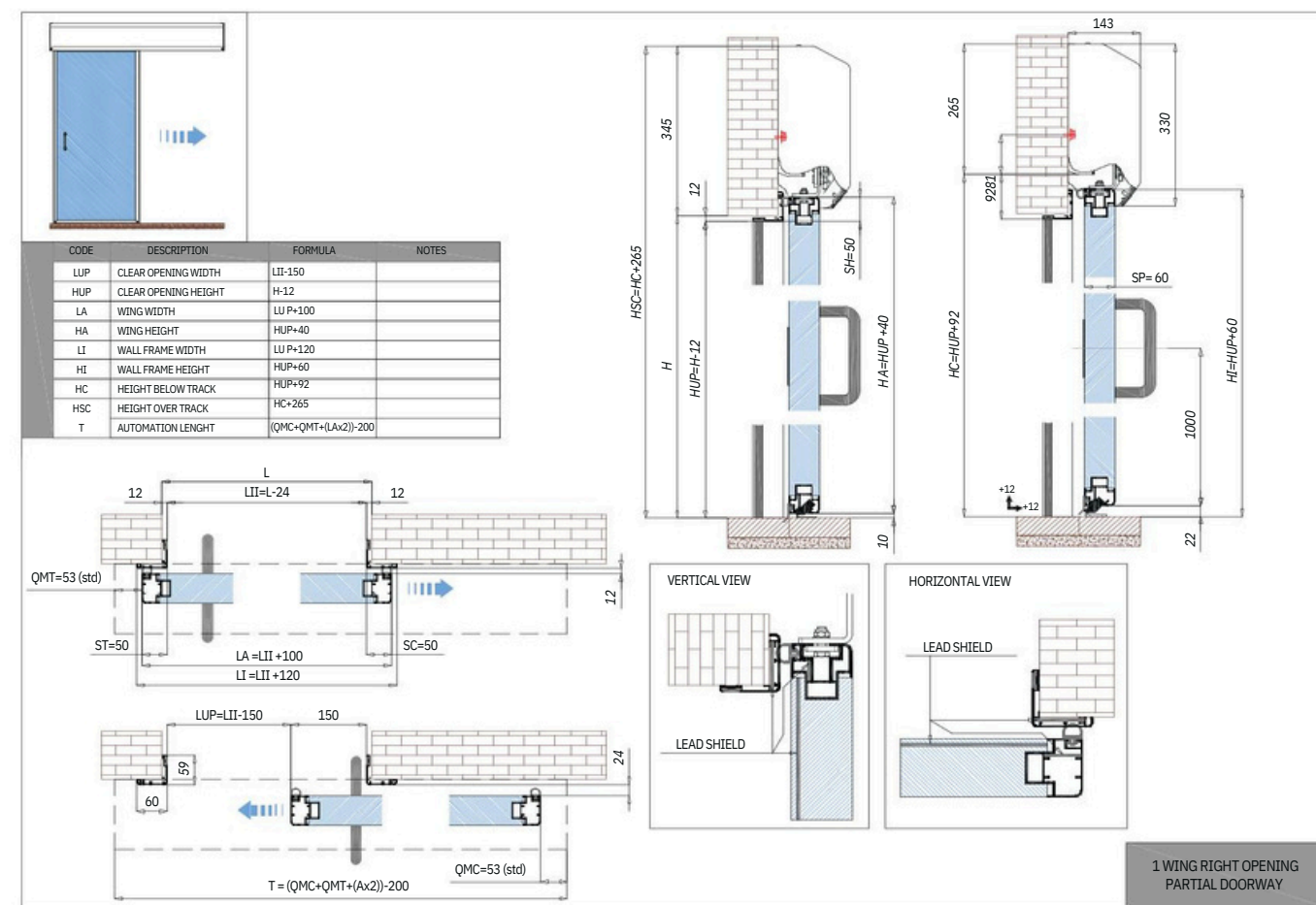
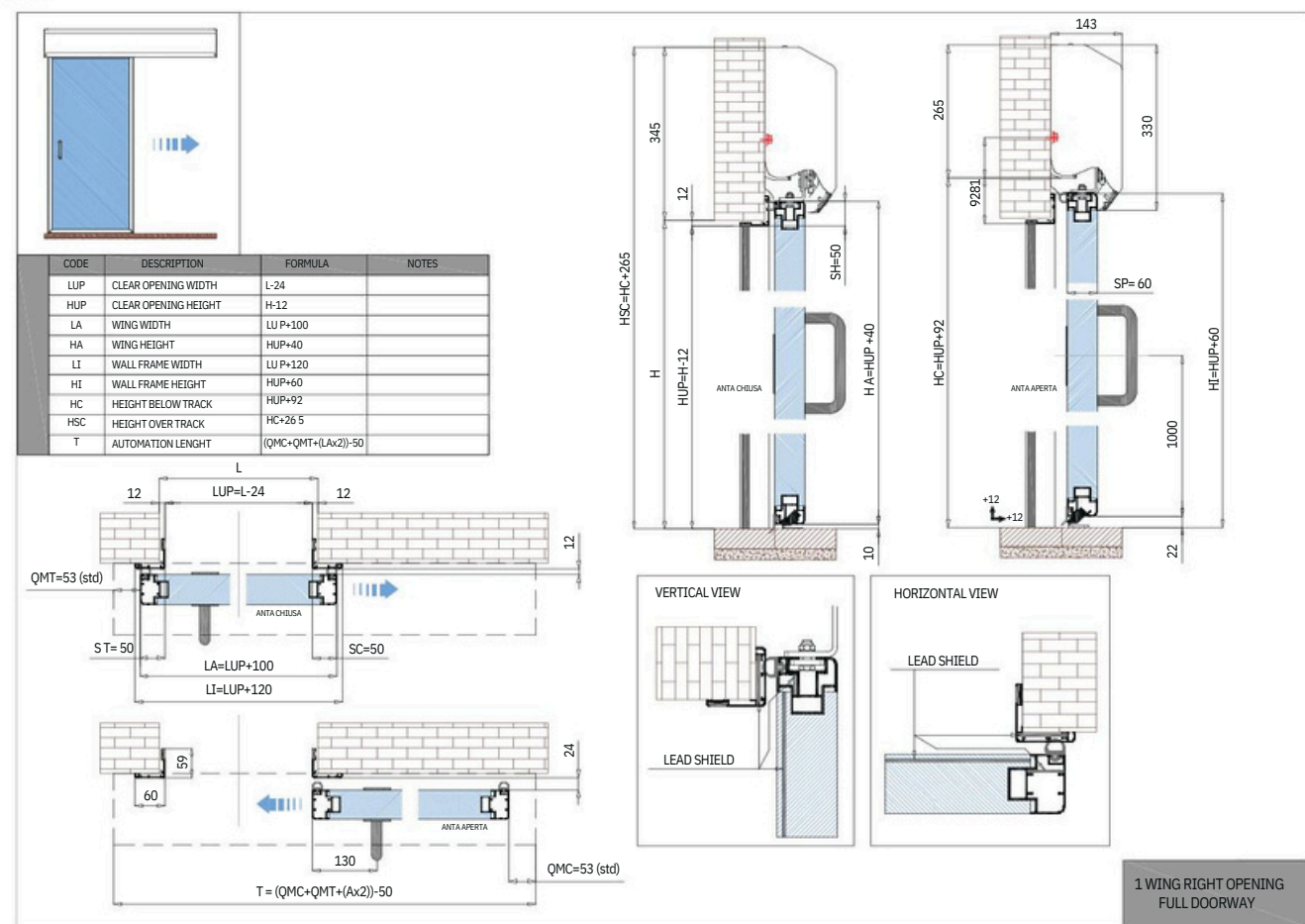
Extruded 60sh/a silicone gaskets on 4 sides. The silicone guarantees high durability and stability over time. The absence to release particles of material makes it the most suitable solution for healthcare, pharmaceuticals and food environments.

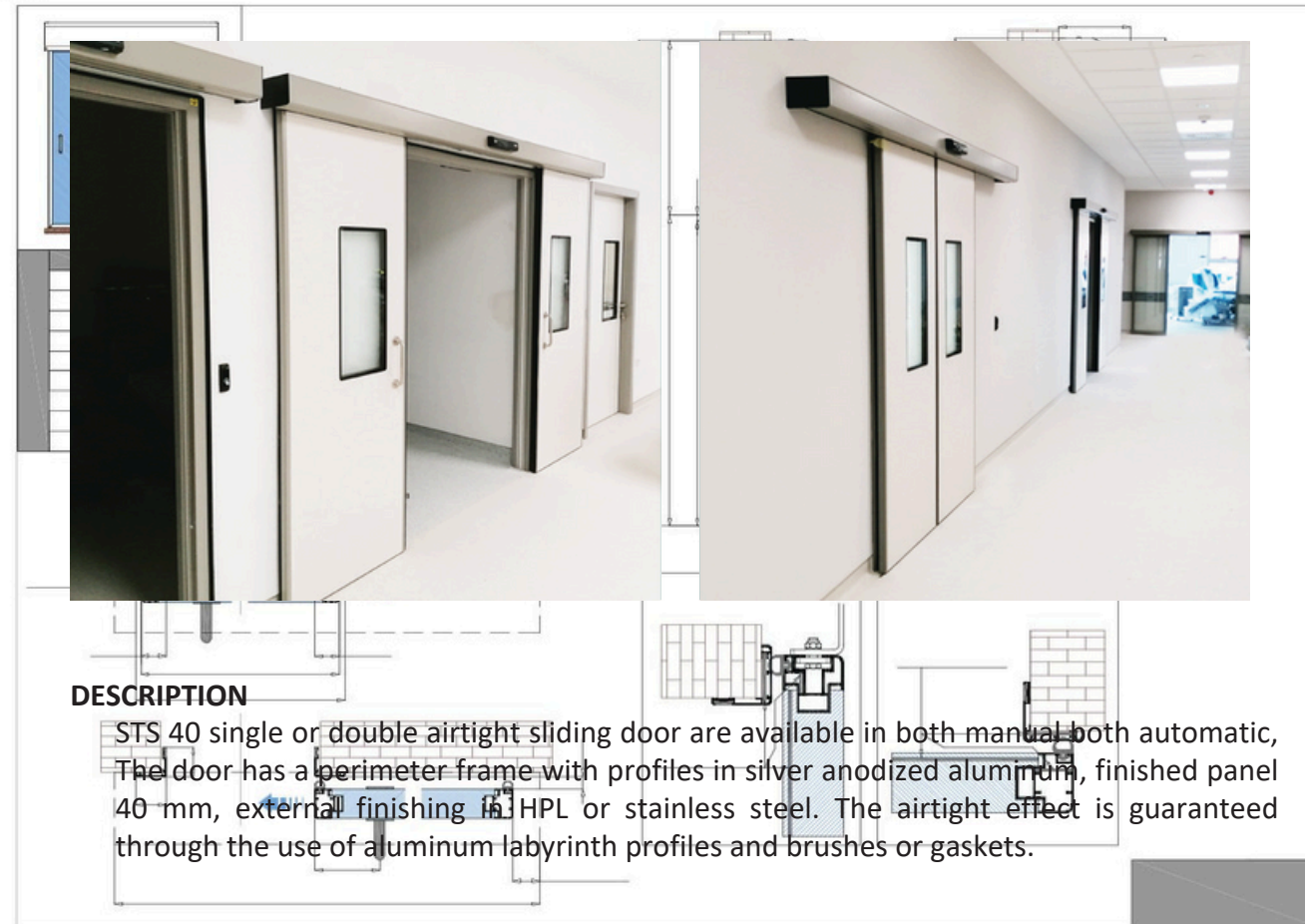
TRACK PROFILE

Extruded aluminum with increased section, replaceable sliding guide.

INSTALLATION REQUIREMENTS

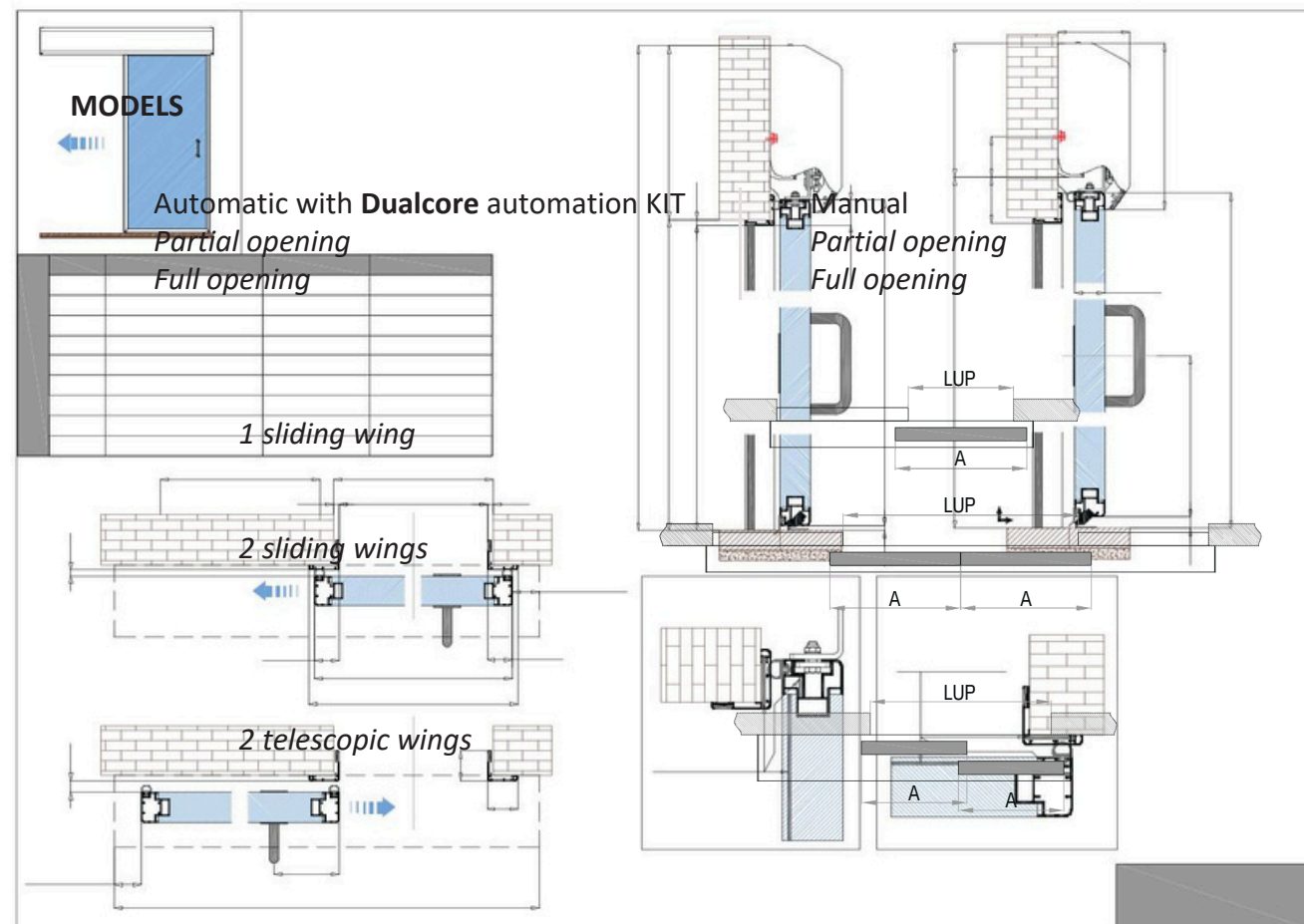
The vertical sides and the top horizontal side must be leveled with maximum error of ± 5 mm. The application surface of the door, both the beam and the frame must be planar and straight. The area of application of the operator's beam must be rigid and strong, it must allow fixing by means of dowels, along the size of the entire beam itself. An applied load of 220Kg must be considered.





DESCRIPTION

STS 40 single or double airtight sliding door are available in both manual both automatic, The door has a perimeter frame with profiles in silver anodized aluminum, finished panel 40 mm, external finishing in HPL or stainless steel. The airtight effect is guaranteed through the use of aluminum labyrinth profiles and brushes or gaskets.



DOOR PANEL

Thickness 40 mm, support and perimeter strip in MDF 4 mm fire retardant to ensure adequate support even in case of doors with lead shielding, internal core in self-extinguishing polystyrene. External finish in HPL 0.9 mm, optional antibacterial treatment, or Scotch-Brite AISI 304 10/10 stainless steel. Available in the version with lead shield, thickness 1-2-3 mm.

PROFILES

Aluminum profiles with increased section with anodizing or painting treatment.

TRACK PROFILE

Extruded aluminum anodized, replaceable sliding guide.

COVER

Extruded aluminium profile with flat surface or standard with ribs.

FLOOR GUIDE

Single floor guide with insert in low-friction material.

WALL FRAME

Perimeter wall frame in aluminum anodized or painted, available in versions with a simple "L" shaped, double "L" for 100 mm wall thickness, double "L" and insert in HPL or steel laminate.

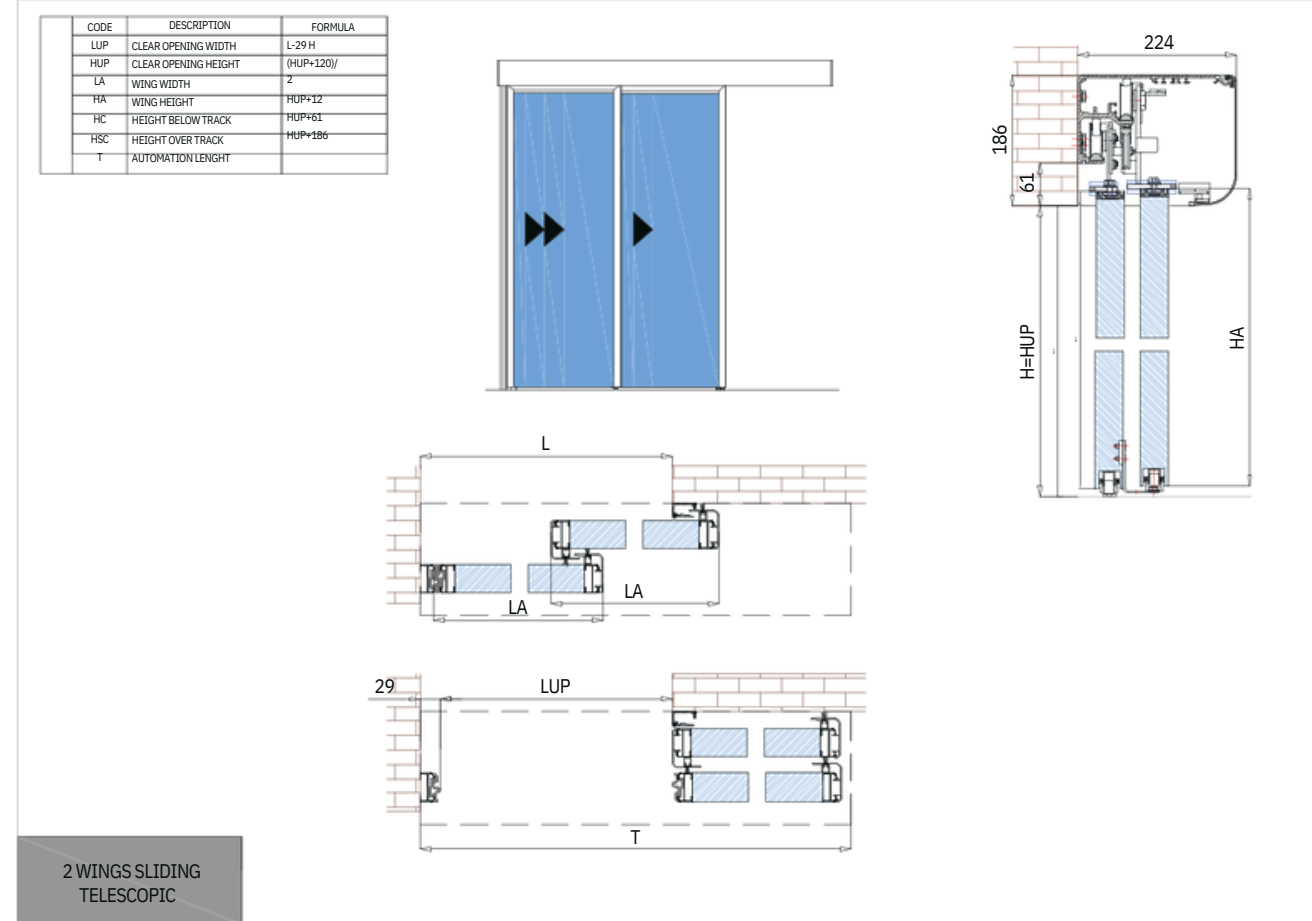
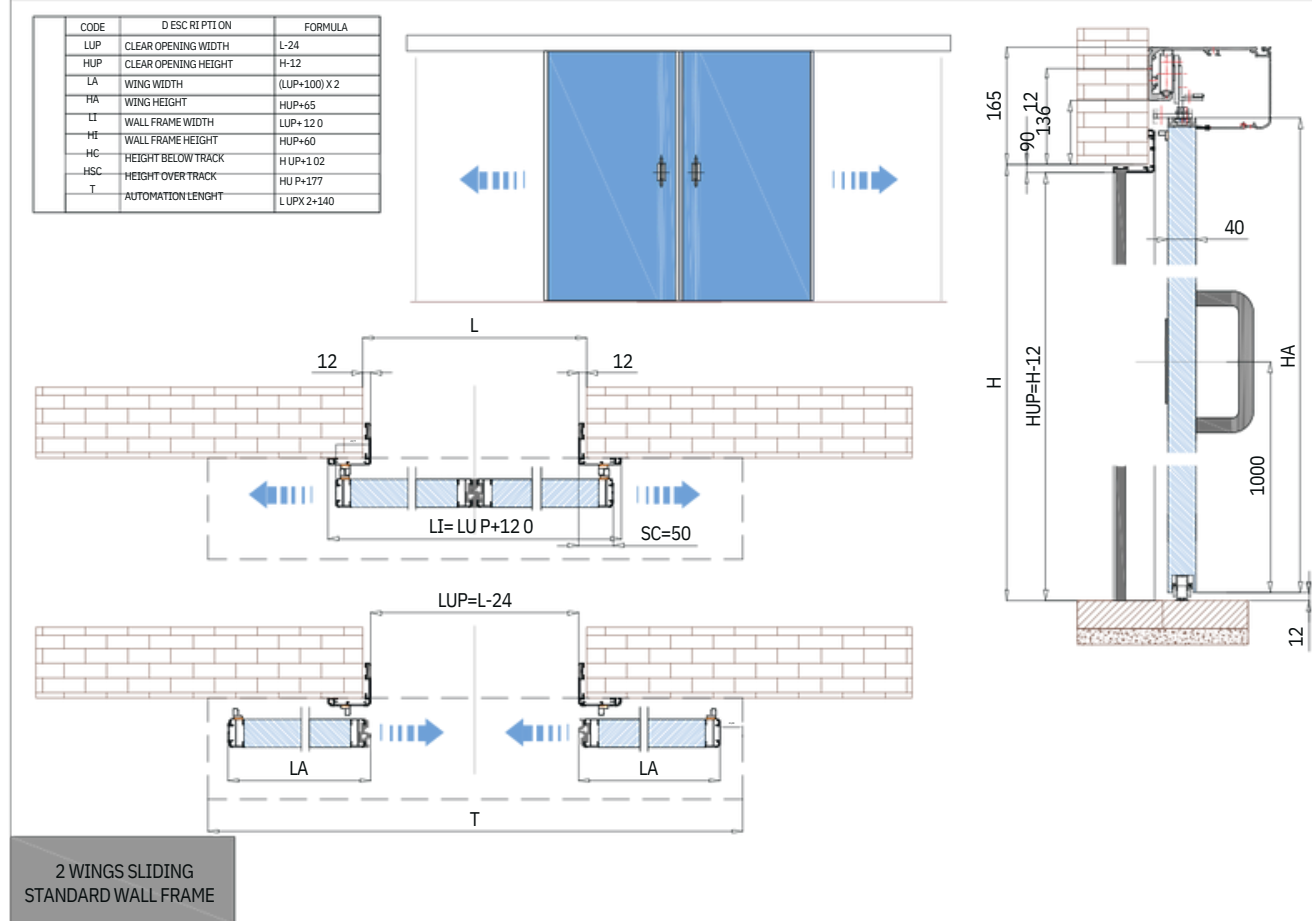
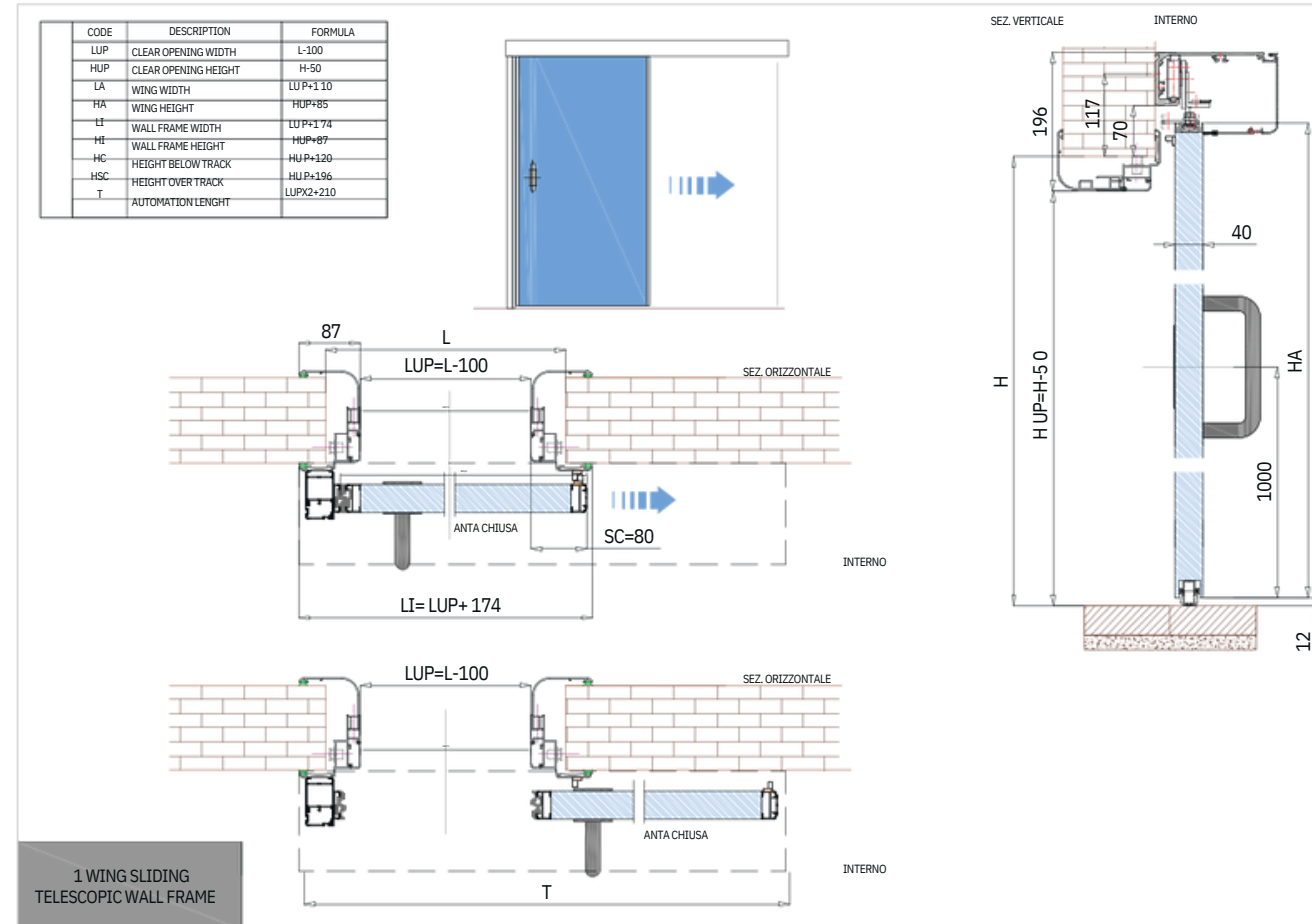
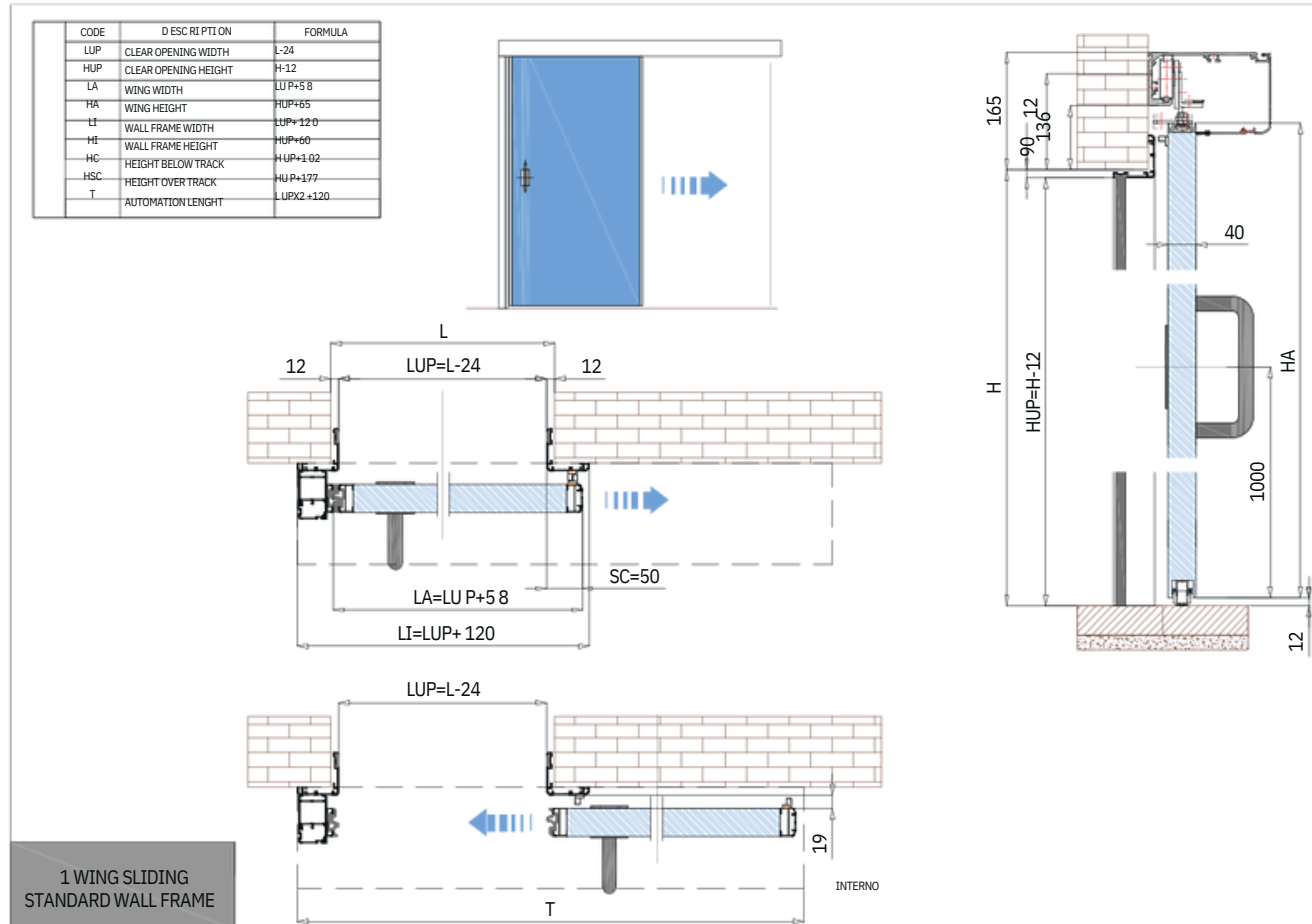
ACCESSORIES

- handles
- protective bands
- windows

INSTALLATION REQUIREMENTS

The vertical sides and the top horizontal side must be leveled with maximum error of ± 5 mm. The application surface of the door, both the beam and the frame must be planar and straight. The area of application of the operator's beam must be rigid and strong, it must allow fixing by means of dowels, along the size of the entire beam itself. An applied load of 300Kg must be considered.





Manual and automatic internal doors, with one or two leaves, suitable for all hospital areas, laboratories, offices.

FLAT

DESCRIPTION

Swing airtight door, manual or automatic, with coplanar thickness 40 mm, external finish in HPL, colors from sample book Abet. Wall frame with rounded aluminium profiles, telescopic, suitable for walls plasterboard and masonry of variable thickness. Silver anodized or RAL painted finishing.



MODELS

Automatic with
KIT Proswing or SmartPRO

1 wing
2 wings

Manual
with optional mechanical
closer door
1 wing
2 wings

DOOR PANEL

40 mm finished door panel consisting of a fir perimeter frame, surface in HPL or aluminium, double support in MDF and core in polystyrene class "E"
Fishing of the borders of the panel with same color as the panel
Optional customization of the edges by adding "T" profile or with silver anodised "C" profiles, or with 7.5mm "U" aluminum profiles, not coplanar with the panel
External finish in HPL 0.9 mm fire retardant or stainless steel 10/10 Scotch-Brite finish
HPL colors from Abet sample book
Frame colors: ox silver and RAL 9010 (other RAL colors and other anodised finishes are available on request)

GASKETS

Double neoprene perimeter gasket, bottom guigliottine gasket with single adjustment mechanism (descent) characterized by the controlled movement of the mobile profile with gasket; immediate descent from the hinge side of the door and consequent gradual descent for the entire length

STANDARD ACCESSORIES

n ° 3 silver aluminum hinges with anti-friction nylon bushing, latch lock, cylinder with n ° 2 keys, deadbolt in double-leaf doors, safety-type handle in silver anodized aluminum

WALL FRAME

Rounded anodized aluminum profiles on telescopic frames (other colors RAL or anodized finishing are available on request)

OPTIONS

- anti-grip handles, in aluminum or stainless steel
- protective bands
- windows
- version with 1- 2 - 3 mm lead shiels for X-ray rooms



Hospital swing doors

ALU

DESCRIPTION

Aluminum door with panel insert available in automatic or manual version, 40mm door blade, external finish in HPL, colors from Abet sample book. Wall frame with rounded aluminium profiles, telescopic, suitable for walls plasterboard and masonry of variable thickness. Silver anodized or RAL painted finishing.



MODELS

Automatic with
KIT Proswing or SmartPRO

1 wing
2 wings

Manual
with optional mechanical
closer door
1 wing
2 wings

DOOR PANEL

Door panel consisting of perimeter frame in aluminum, section 50/66, with lower crosspiece H 100 mm. Panel 40 mm thick , double support in mdf and core in polystyrene class "E" surrounded by plastic laminate or aluminium coating. External finish in HPL 0.9 mm fire retardant or stainless steel 10/10 Scotch Brite. HPL, colors from Abet sample book Panel colors aluminum version standard: RAL 9010, silver, RAL 1013, RAL 6005, RAL 7016, Version with reducer profiles for laminated safety glass with transparent or opaque finish Frame colors: ox silver and RAL 9010 (other RAL colors and other anodized finishes are available on request)

GASKETS

Double neoprene perimeter gasket, bottom guigliottine gasket with single adjustment mechanism (descent) characterized by the controlled movement of the mobile profile with gasket; immediate descent from the hinge side of the door and consequent gradual descent for the entire length.

STANDARD ACCESSORIES

n ° 3 silver aluminum hinges with anti-friction nylon bushing, latch lock, cylinder with n ° 2 keys, deadbolt in double-leaf doors, safety-type handle in silver anodized aluminum.

WALL FRAME

Rounded anodized aluminum profiles on telescopic frames (other colors RAL or anodized finishing are available on request)

OPTIONS

- anti-grip handles, in aluminum or stainless steel
- protective bands
- windows



FLAT 42 DB



DESCRIPTION

Aluminum door with finished panel available in automatic or manual versions, Swing door with CERTIFIED NOISE REDUCTION at 42 dB, made with steel frame galvanized, RAL standard painted or stainless steel 15/10 mm surface finishing, wall frame non-telescopic. Suitable for plasterboard and masonry walls of any thickness

MODELS

Automatica con kit
Proswing o SmartPRO

1 anta
2 ante

Manuale
con o senza chiudiporta meccanico

1 anta
2 ante

CERTIFICATIONS

Test report for soundproofing N ° 264323 issued by Istituto Giordano S.p.A)

DOOR PANEL

Finished door panel thickness 58 mm consisting of a perimeter frame in wooden material, with double overlap on three sides of the door, external coating in HPL and core made of sound-absorbing materials. Edges made with painted galvanized steel or stainless steel profile. Made with flame retardant materials (HPL and 4 mm fire retardant MDF) Panel colors: Abet / Polyrey colors available in door format Frame colors: RAL painting

GASKETS

Double neoprene perimeter gasket, drop bottom guigliottine gasket with mechanism with a double adjustment (descent and inclination) characterized by movement controlled (immediate descent from the hinge side of the door e consequent gradual descent along the entire length) for an adaptation to the floor, model 1770XNS No Sound with Rsw = 54 dB reduction certificate

STANDARD ACCESSORIES

n ° 3 VX7729 / 120 hinges in stainless steel suitable for a weight of 120 kg, external, lock with latch, cylinder with 2 keys, deadbolt in double-leaf doors, handle in stainless steel

WALL FRAME

Frame with square profile, straight or rounded R15-R25, consisting of three elements to be screwed at 45 °

Fixing of the wall frame to the wall with clamp, rapid block, holes for polyurethane foam injection hidden under the wing stopper gasket and internal lining of the wall frame with acoustically material performing

OPTIONS

- possibility to customize the door with the insertion of photographic laminates, aluminum inserts or realization of the same in two-tone colors
- HPL laminate can be used on request with antibacterial treatment obtained with silver ions
- footplate band and / or assembled floor board coplanar with the laminate (in anodized aluminum or stainless steel)
- panic bars



Many different solutions, from the print subject to the surface finish, the solutions in HPL guarantee maximum flexibility in realization and great aesthetic impact.
Antibacterial solutions with polyvalent, resistant and hygienic coating.

Stainless steel is easy to clean, resistant to frequent washing and unassailable by any chemical agents.

The glass divides the spaces in a discreet way, with a filtered light that create in the rooms a simple and natural atmosphere.

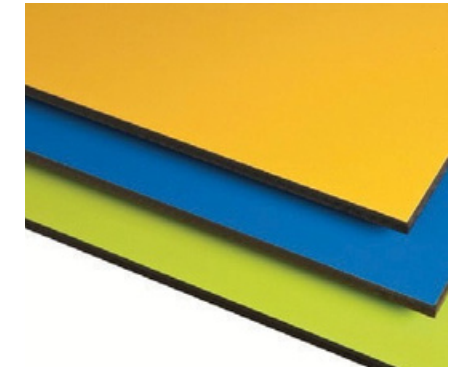


DOOR PANEL



HPL

Thickness 0,9mm
fire retardant



ANTIBACTERIAL

Thickness 0,9mm
fire retardant



STAINLESS STEEL

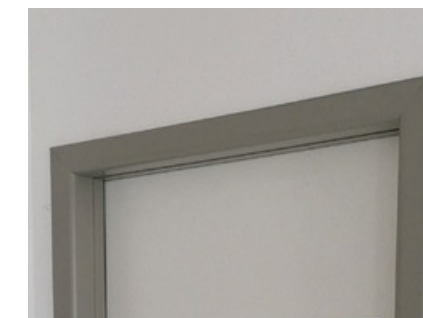
Thickness 10/10
Scotch-Brite



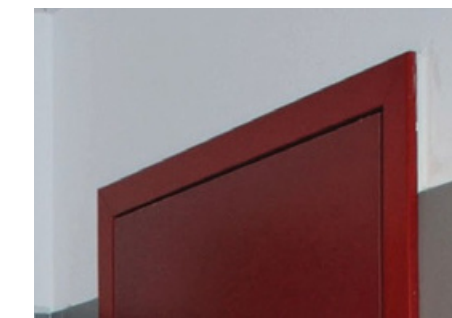
GLASS

Flush with panel
Maximum size
according to door
panel

PROFILES



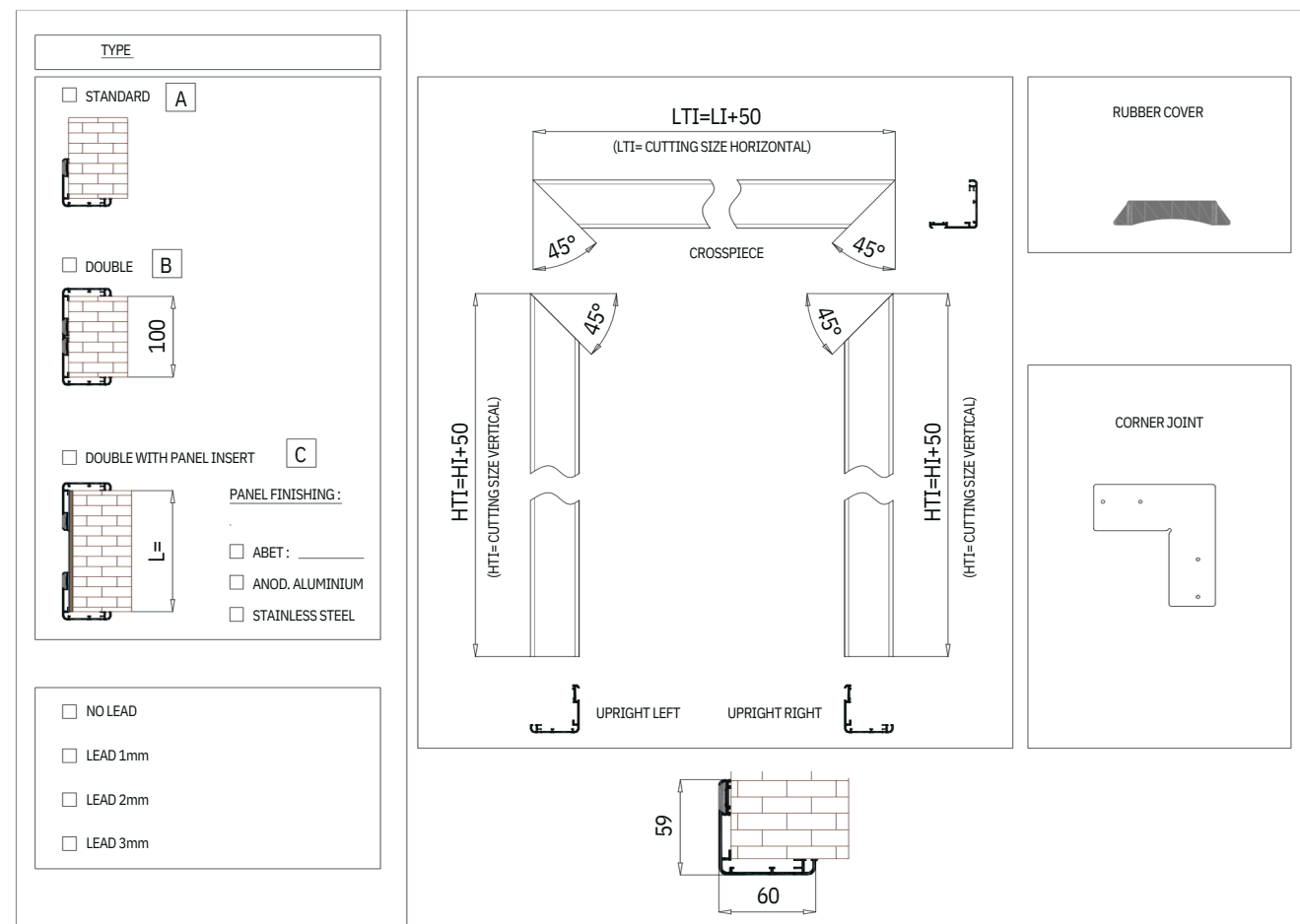
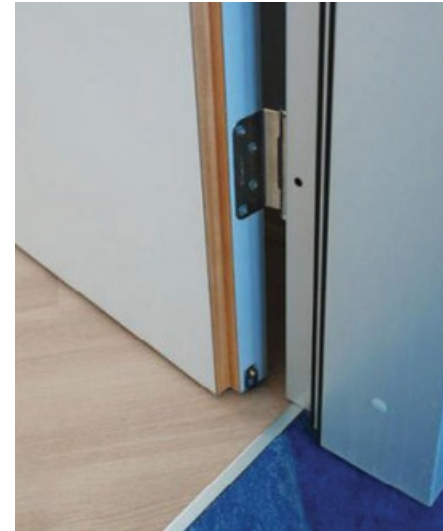
SILVER ANODIZED



RAL COATING

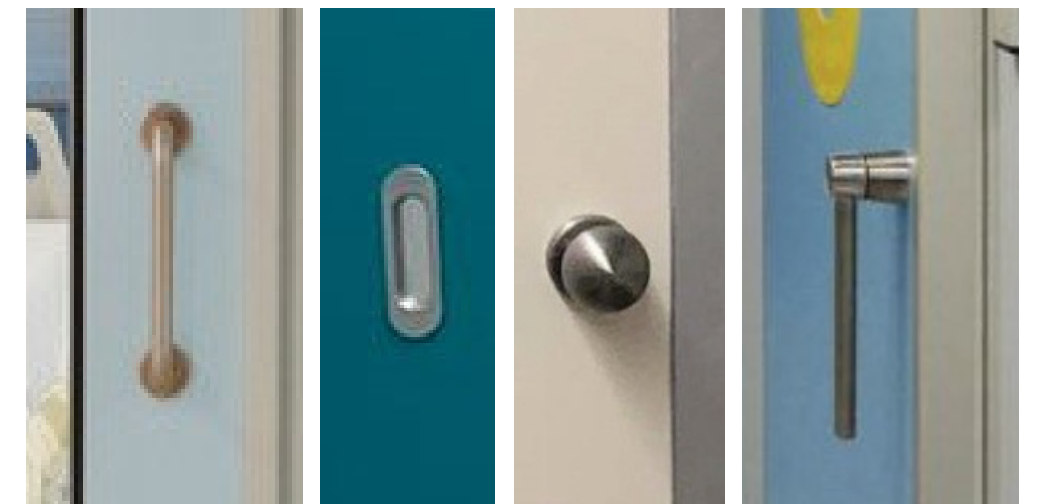
Fixed wall frame covering the perimeter wall on the three sides , available in different solutions, single, double or telescopic for walls with different thickness.

Finishing in anodized aluminium, RAL coating or Stainless Steel



The range of Sesamo hospital doors can be completed with a wide range of accessories such as handles, windows, with manual or electric Venetian blinds, electrical contacts and locks. Sesamo automatismes can be completed with opening and safety devices such as sensors, selectors and push buttons or with touchless activation.

- HANDLES



- PROTECTIVE BANDS

- ELECTRIC AND MANUAL LOCKS

- WINDOWS





SESAMO SRL

Str. Gabannone, 8/10
15030 Terruggia – AL – ITALY

CALL

Tel: +39 0142 403223
Fax: +39 0142 403256

ONLINE

www.sesamo.eu
info@sesamo.eu

Fabrika: Ferhatpaşa
Mahallesi 71. Sokak No:50
Ataşehir / İstanbul
Phone: +90 533 094 05 44
www.maysayapi.com.tr

